

**LASSCO**

[www.lassco.co.uk](http://www.lassco.co.uk)

THREE PIGEONS

LASSCO Three Pigeons  
Milton Common,  
Oxfordshire OX9 2JN  
+44 (0)1844 277188  
[3pigeons@lassco.co.uk](mailto:3pigeons@lassco.co.uk)

BRUNSWICK HOUSE  
30 Wandsworth Road,  
London SW8 2LG  
+44 (0) 20 7394 2100  
[brunswick@lassco.co.uk](mailto:brunswick@lassco.co.uk)



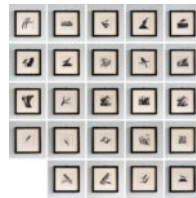
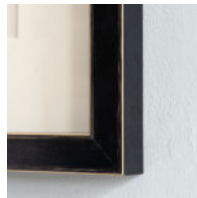
# WOODCUTS BY ERIC FITCH DALGLISH

Published 1928

Eric Fitch Dalglish was a wood-engraver, painter, draughtsman, author, illustrator and naturalist. Born in London, he studied at university both in London and Bonn, Germany and after WWI was taught engraving by Paul Nash. He exhibited at the Redfern Gallery, with the Society of Wood Engravers, of which he was a member, and the New English Art Club. Examples of his work are held by the British Museum, V&A Museum, Manchester City Art Gallery, and British Council Collection.

DIMENSIONS: 30cm (11<sup>3/4</sup>") High, 30cm (11<sup>3/4</sup>") Wide, 2cm (0<sup>3/4</sup>") Deep

STOCK CODE: P01229 B



## HISTORY

Published by Dent at the Temple Press, Letchworth in Great Britain. Framed