

LASSCO

[www.lassco.co.uk](http://www.lassco.co.uk)

THREE PIGEONS

LASSCO Three Pigeons

Milton Common,

Oxfordshire OX9 2JN

+44 (0)1844 277188

[3pigeons@lassco.co.uk](mailto:3pigeons@lassco.co.uk)

BRUNSWICK HOUSE

30 Wandsworth Road,

London SW8 2LG

+44 (0) 20 7394 2100

[brunswick@lassco.co.uk](mailto:brunswick@lassco.co.uk)



# THE WORKS OF GEORGE ROUALT. 'THE ENGLISH CLOWN', 1938-39,

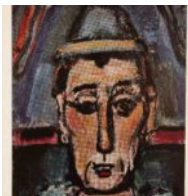
Lithographs after George Roualt printed 1958

Although Georges Rouault a contemporary of Cubism, Expressionism and Fauvism, he never formally associated himself with any of these movements. As an independent he found his inspiration in the realities of everyday life and in religious subjects which he imbued with an authentic spirituality. Early in his career Parisian art dealer, Ambroise Vollard, bought the full contents of Georges Rouault's studio. The artist agreed on the condition that he could finish his work at his own pace. Most of his works represented circus figures, religious subjects or landscapes.

DIMENSIONS: 54cm (21<sup>3/4</sup>") High, 46cm (18") Wide, 2cm (0<sup>3/4</sup>") Deep

PRICE: £225

STOCK CODE: P01350 The English Clown



## HISTORY

Lithographs printed 1958 by Jarrold and Sons in association with Harry N. Abrams. Framed in black with a cream mount.