

# LASSCO

[www.lassco.co.uk](http://www.lassco.co.uk)

## THREE PIGEONS

LASSCO Three Pigeons  
Milton Common,  
Oxfordshire OX9 2JN  
+44 (0)1844 277188  
[3pigeons@lassco.co.uk](mailto:3pigeons@lassco.co.uk)

## BRUNSWICK HOUSE

30 Wandsworth Road,  
London SW8 2LG  
+44 (0) 20 7394 2100  
[brunswick@lassco.co.uk](mailto:brunswick@lassco.co.uk)



# THE TEHIDY PLAQUES: A PAIR OF GEORGE II CARVED LIMESTONE AND LEAD RELIEF-CARVED PLAQUES

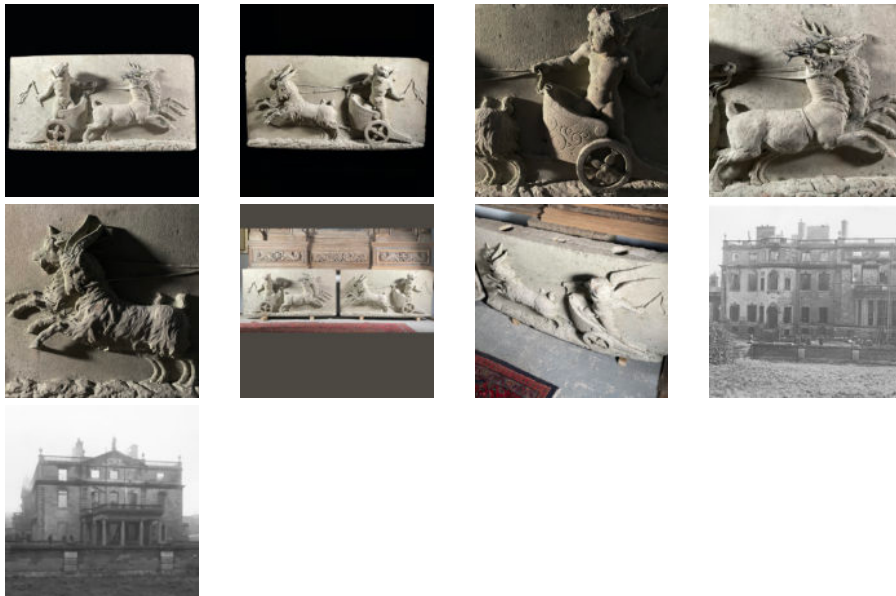
carved as architectural ornaments for Tehidy House, Cornwall, in the mid 18th Century,

each plaque, slightly coved in plan, carved in deep relief with a winged putto driving a chariot, on one tablet the chariot drawn by a pair of galloping stags (with original lead antlers), on the other goats; each putto raises a whip as they career towards each other,

DIMENSIONS: 61cm (24") High, 122cm (48") Wide, 28cm (11") Deep

PRICE: POA

STOCK CODE: 47185



## HISTORY

Tehidy House was rebuilt in two phases in the mid-eighteenth century and these plaques belong to one of them. In old photographs taken after the fire that consumed the house in 1919 – just after it had been bought for use as a Tuberculosis Hospital – they can be seen flanking windows high on a curved bay on one of the facades of the main house (hence their coved form). Many of the materials of the house were re-used in order to put up a smaller

building in the grounds. The footprint of the house was turned into a sunken garden using the basement room. These plaques were retained as ornaments in this garden. The estate was sold in 1988 to become luxury apartments.



Tehidy house after the 1919 fire - the plaques can be seen either side of the first floor arched window.