

LASSCO

www.lassco.co.uk

THREE PIGEONS

London Road,
Milton Common,
Oxfordshire OX9 2JN
+44 (0)1844 277188
3pigeons@lassco.co.uk

BRUNSWICK HOUSE

30 Wandsworth Road,
Vauxhall,
London SW8 2LG
+44 (0) 20 7394 2100
brunswick@lassco.co.uk

ROPEWALK

Maltby Street,
Bermondsey,
London SE1 3PA
+44(0)2073948061
ian@lassco.co.uk



SELF PORTRAIT AS A RENAISSANCE LADY, BY SHEILA STEAFEL

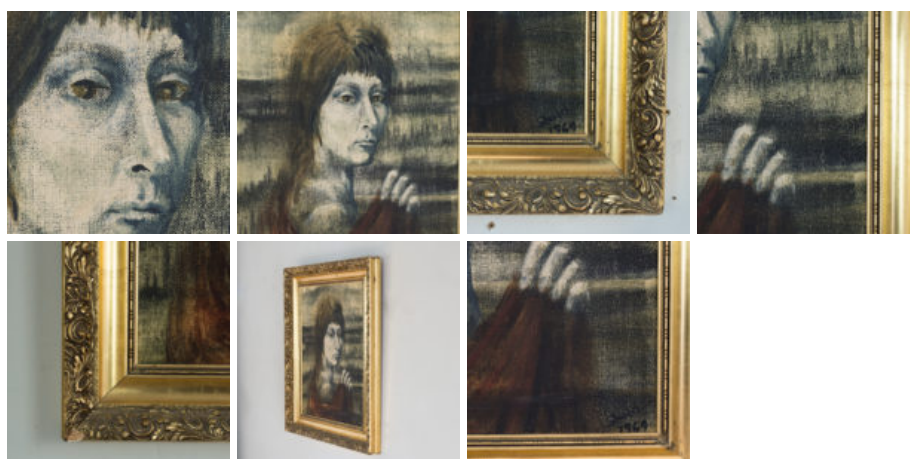
Oil on canvas board

Signed and dated 1969. Framed

DIMENSIONS: 57cm (22½") High, 47cm (18½") Wide, 4.5cm (1¾") Deep

PRICE: £600

STOCK CODE: P01108



HISTORY

Sheila Steafel, was well-known as a versatile comic and character actor. Appearing in many landmark television program during the 1960s. Born in Johannesburg, South Africa, Sheila the daughter of Harold and Eda. She studied fine art At Witwatersrand University, but abandoned the course to travel to Britain to audition for the Royal Academy of Dramatic Art in London in 1953. In 1958 she married the actor Harry H Corbett but divorced in 1964 and did not marry again.