

**LASSCO**

[www.lassco.co.uk](http://www.lassco.co.uk)

THREE PIGEONS

LASSCO Three Pigeons

Milton Common,

Oxfordshire OX9 2JN

+44 (0)1844 277188

[3pigeons@lassco.co.uk](mailto:3pigeons@lassco.co.uk)

BRUNSWICK HOUSE

30 Wandsworth Road,

London SW8 2LG

+44 (0) 20 7394 2100

[brunswick@lassco.co.uk](mailto:brunswick@lassco.co.uk)



## PINNOCK'S KNOWLEDGE 1838,

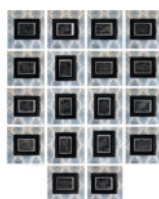
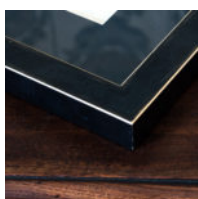
County map of Gloucestershire,

Woodblock print published 1838. William Pinnock, born 1782 was an, English publisher and educational writer. In 1817 he went to London and, in partnership with Samuel Mander, began to publish cheap educational works. The firm's first productions were a series of Catholic instructional works aimed at the young, arranged in the form of question and answer, of the different departments of knowledge. They were followed by abridged editions of Goldsmith's histories of England, Greece and Rome, and a series of county histories which were no less profitable. Pinnock lost nearly all his money in outside speculation, and died in London on the 21st of October 1843.

DIMENSIONS: 37.5cm (14<sup>3/4</sup>" ) High, 30.5cm (12" ) Wide, 2cm (0<sup>3/4</sup>" ) Deep

PRICE: £120 each

STOCK CODE: P01213 Q



### HISTORY

Unusual woodblock engraved print to show white lines on black. Although, easier to produce than a normal wood engraving of black lines on a white background, this type were a commercial failure being difficult to read and so are quite rare. Framed and mounted in black.