

# LASSCO

[www.lassco.co.uk](http://www.lassco.co.uk)

## THREE PIGEONS

LASSCO Three Pigeons  
Milton Common,  
Oxfordshire OX9 2JN  
+44 (0)1844 277188  
[3pigeons@lassco.co.uk](mailto:3pigeons@lassco.co.uk)

## BRUNSWICK HOUSE

30 Wandsworth Road,  
London SW8 2LG  
+44 (0) 20 7394 2100  
[brunswick@lassco.co.uk](mailto:brunswick@lassco.co.uk)



# PABLO PICASSO, MES DESSINS D'ANTIBES,

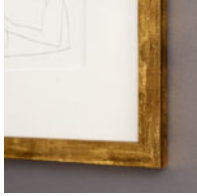
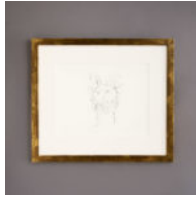
set of 16 lithographs published c1967

Published in Paris, c1967 these lithographs were based on the sketches made at Grimaldi Museum at Antibes. Picasso had accepted an offer to set up his studio in the Castle from its curator Romuald Dor de la Souchère and worked from mid September through mid November of 1946. Mounted and framed in gold. The Château Grimaldi in Antibes was built on what had been the ancient Greek Acropolis of Antipolis, and was owned until 1608 by the Grimaldi family. In 1925 it was acquired to become a museum by the City of Antibes

DIMENSIONS: 39.5cm (15½") High, 45.5cm (18") Wide, 1cm (0½") Deep

STOCK CODE: P01240





## HISTORY