

LASSCO

www.lassco.co.uk

THREE PIGEONS

LASSCO Three Pigeons

Milton Common,

Oxfordshire OX9 2JN

+44 (0)1844 277188

3pigeons@lassco.co.uk

BRUNSWICK HOUSE

30 Wandsworth Road,

London SW8 2LG

+44 (0) 20 7394 2100

brunswick@lassco.co.uk



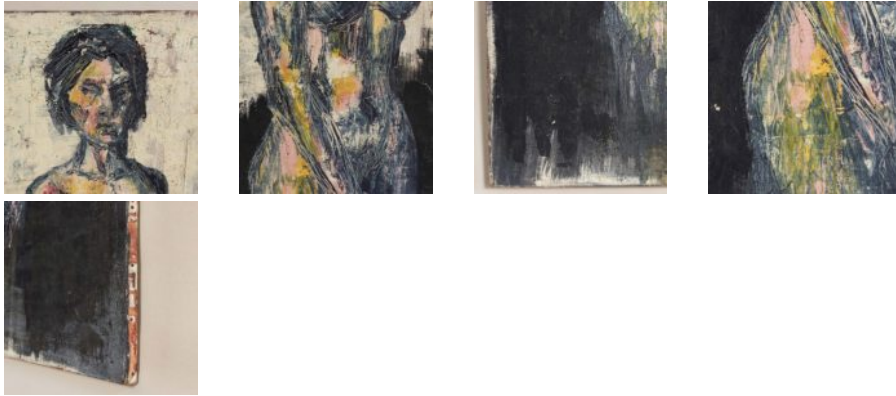
NUDE OF A LADY BY SHELIA STEAFEL,

Oil-on-canvas circa 1957,

Large-scale nude study painted in the expressionist style during the late 1950's. Unframed

DIMENSIONS: 48cm (19") High, 28cm (11") Wide, 3cm (1 $\frac{3}{4}$ ") Deep

STOCK CODE: P01126



HISTORY

Sheila Frances Steafel, 1935 – 2019, born in Johannesburg, South Africa, studied fine art at Witwatersrand University, but abandoned the course to travel to Britain to audition for the Royal Academy of Dramatic Art in London in 1953. She became well-known as a versatile comic and character actor but was a prolific painter when not acting. Appearing in many landmark television program during the 1960s. In 1958 she married the actor Harry H Corbett but divorced in 1964 and did not marry again.