

LASSCO

www.lassco.co.uk

THREE PIGEONS

LASSCO Three Pigeons

Milton Common,

Oxfordshire OX9 2JN

+44 (0)1844 277188

3pigeons@lassco.co.uk

BRUNSWICK HOUSE

30 Wandsworth Road,

London SW8 2LG

+44 (0) 20 7394 2100

brunswick@lassco.co.uk



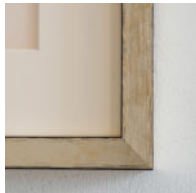
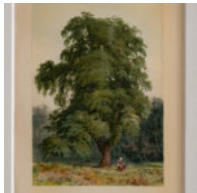
NINETEENTH CENTURY ARBOREAL PRINTS,

Original Chromolithographs

European trees published c1880. Mounted in cream framed in pale gold. '*Hornbeam*'

DIMENSIONS: 33.5cm (13^{3/4}") High, 27.5cm (10^{3/4}") Wide, 2cm (0^{3/4}") Deep

STOCK CODE: P01235 J



HISTORY

Chromolithography is based on the principle that oil and water do not mix. The process involves the artist drawing the design directly onto a highly polished lithographic stone using a greasy, acid resistant pigment. When the stone is then placed in a weak acid the uncoloured areas are etched by the acid, leaving the painted areas intact and ready to be used as a printing surface. For multi-colour printing, several stones would be prepared, one for each colour. Gradations of colour were achieved by applying hundreds of tiny dots of each colour on their respective stones, so that when each stone was printed onto the paper the resultant area would be printed with multiple dots of different colours which to the human eye would appear realistic. But if a magnifying glass is used to examine the printed areas, the presence of irregular, multicoloured dots will indicate that the card was printed by the chromolithographic method.