

LASSCO

www.lassco.co.uk

THREE PIGEONS

LASSCO Three Pigeons

Milton Common,

Oxfordshire OX9 2JN

+44 (0)1844 277188

3pigeons@lassco.co.uk

BRUNSWICK HOUSE

30 Wandsworth Road,

London SW8 2LG

+44 (0) 20 7394 2100

brunswick@lassco.co.uk



LARGE BRONZE MODEL OF A SEATED MERCURY,

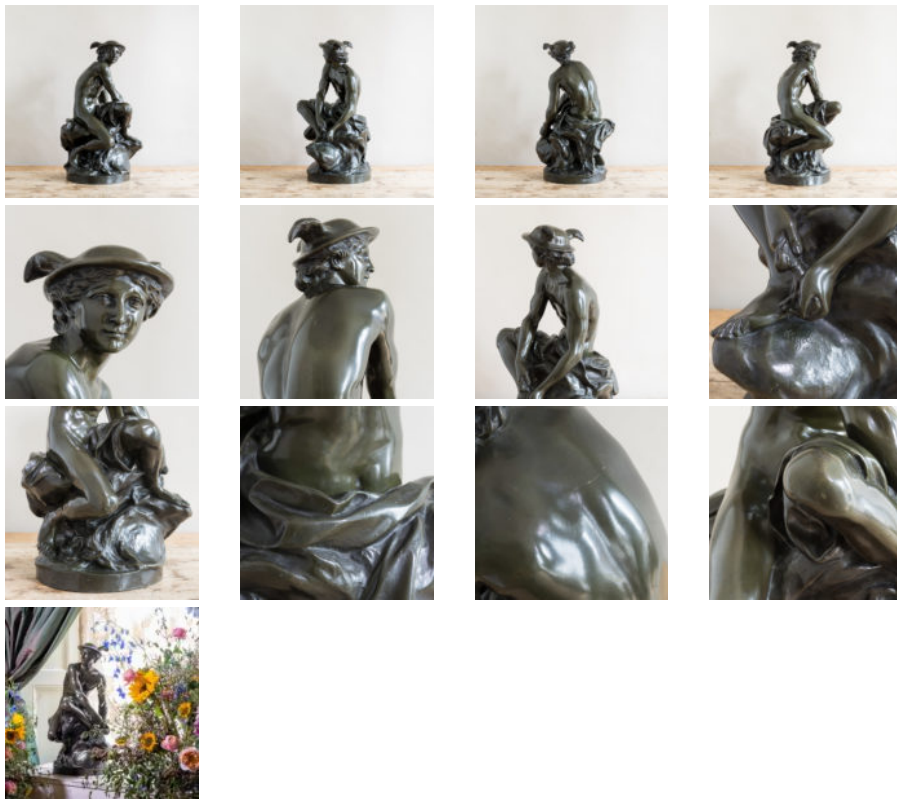
after Jean-Baptiste Pigalle (1714-1785),

late nineteenth century or early twentieth century, French, base diameter 27 cm.

DIMENSIONS: 59.5cm (23^{1/2}"") High, 35.5cm (14") Wide, 31cm (12^{3/4}"") Deep, diameter of base 27 cm.

PRICE: £4,850

STOCK CODE: 78569



HISTORY

This statue shows Mercury fastening his famous winged sandals whilst seated on a cloud. The subject is the most celebrated of Pigalle's works, the original produced in plaster was later cast in bronze and resides in the The Musee Du Louvre Paris.