

# LASSCO

[www.lassco.co.uk](http://www.lassco.co.uk)

THREE PIGEONS

LASSCO Three Pigeons

Milton Common,

Oxfordshire OX9 2JN

+44 (0)1844 277188

[3pigeons@lassco.co.uk](mailto:3pigeons@lassco.co.uk)

BRUNSWICK HOUSE

30 Wandsworth Road,

London SW8 2LG

+44 (0) 20 7394 2100

[brunswick@lassco.co.uk](mailto:brunswick@lassco.co.uk)



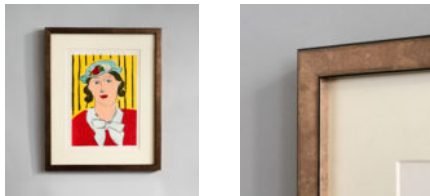
# FEMME AU CHAPEAU BY HENRI MATISSE, VERVE VOL 2 / NO. 5-6.

Original lithograph printed in 1939 by Mourlot Frères of Paris

The Verve Review was a purposefully luxurious. It ran from 1937 to 1960, but with only 38 editions available, due to the high degree of design and editorial work dedicated to each issue. Each edition contained unique lithographic prints, commissioned by the editor, and each cover a double-page lithograph elaborated by one of the artists contained within. It was the brainchild of its editor Stratis Eleftheriades, a Greek National who moved to Paris in the early thirties to take part in the growing Modernist movement, writing under the name of Teriade.

DIMENSIONS: 51cm (20") High, 40cm (15<sup>3/4</sup>") Wide, 2cm (0<sup>3/4</sup>") Deep

STOCK CODE: P01275 A



## HISTORY

Femme au Chapeau by Henri Matisse, Verve Vol 2 / No. 5-6. Published by E. Teriade, Paris, July/October 1939

Presented in a cream coloured mount and framed in a bronze finish.