

LASSCO

www.lassco.co.uk

THREE PIGEONS

LASSCO Three Pigeons
Milton Common,
Oxfordshire OX9 2JN
+44 (0)1844 277188
3pigeons@lassco.co.uk

BRUNSWICK HOUSE
30 Wandsworth Road,
London SW8 2LG

+44 (0) 20 7394 2100
brunswick@lassco.co.uk



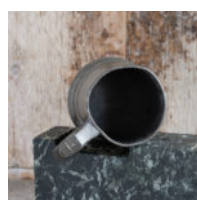
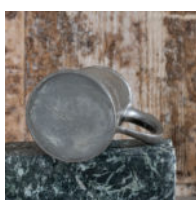
ANTIQUE ENGLISH PEWTER MUG

A highly patinated and worn, early 19th Century pewter Ale Mug. The vessel is decorated with broad banding and turned rim with an articulated single volute style handle and notched thumb-piece all on a heavy ogee moulded base. The mug is unmarked with but the form, weight and wear suggest an early 19th Century date.

DIMENSIONS: 9.5cm (3^{3/4}") High, 11cm (4^{1/4}") Wide, 8cm (3^{1/4}") Deep

PRICE: £35

STOCK CODE: AD1685 N



HISTORY

Until the adoption of mass-produced commercial glassware in the Mid 19th Century the Pewter Mug was the customary vessel in which most people in Britain would take their Ale, Cider or Beer.

Mugs and Tankards were often the private property of individuals and were merely deposited in the ale houses which they regularly frequented.

A Mug, as distinguished from a true Tankard by its open, unlidded top, could come in any of the English customary measurements ranging from a Half Pint up to a full Gallon in capacity.

In a tradition dating back to the earliest Witengamots of the Saxon Kings of England, Mugs, Tankards, Flagons, Cups and liquid measures of all kinds were strictly liable to periodic inspection by His Majesty's officers. Thus one can see, through the Standard Marks on many such vessels, the development of British Weights and measures down the centuries.

While it is inadvisable to drink from pre-19th century pewter, the lead content being too high,

vessels from after 1770 were manufactured from the new 'Britannia' alloy discovered by James Vickers of Sheffield and there are no restrictions on its use for drinking.