

LASSCO

www.lassco.co.uk

THREE PIGEONS

LASSCO Three Pigeons

Milton Common,

Oxfordshire OX9 2JN

+44 (0)1844 277188

3pigeons@lassco.co.uk

BRUNSWICK HOUSE

30 Wandsworth Road,

London SW8 2LG

+44 (0) 20 7394 2100

brunswick@lassco.co.uk



CHARLES WATSON, CHELSEA

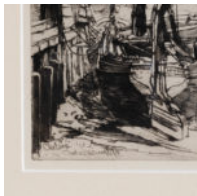
1879

A framed and mounted etching by the English artist Charles Watson (1846-1927) depicting the foreshore at Chelsea with two barges at low tide. In the distance is shown the tower of Chelsea Old Church and a part of Old Battersea Bridge, replaced in 1890. The vantage is from close to the current site of the Chelsea Yacht and Boat Yard. Signed on the plate.

DIMENSIONS: 31cm (12^{3/4}") High, 41cm (16^{1/4}") Wide, 1.5cm (0^{1/2}") Deep

PRICE: £550

STOCK CODE: AD1559



HISTORY

Charles John Watson, RE (1846-1927)

The second son of a North Anglian printseller and carpenter, Charles John Watson moved to London in 1888. Settling in Chelsea where he took a studio at 5 Wentworth Studios, Manresa Road, Chelsea.

Beginning as an artists colourman he worked his way up to financial and artistic independence and was instrumental in the Etching Revival in Britain. He exhibited at the Royal Academy, the Society of British Artists, the Institute of Painters in Water Colours and, most significantly, the Society of Painter-Engravers and Engravers, of which he was an early and significant member.

His work is represented in numerous public collections, including at the V&A.