

# LASSCO

[www.lassco.co.uk](http://www.lassco.co.uk)

## THREE PIGEONS

LASSCO Three Pigeons  
Milton Common,  
Oxfordshire OX9 2JN  
+44 (0)1844 277188  
[3pigeons@lassco.co.uk](mailto:3pigeons@lassco.co.uk)

BRUNSWICK HOUSE  
30 Wandsworth Road,  
London SW8 2LG

+44 (0) 20 7394 2100  
[brunswick@lassco.co.uk](mailto:brunswick@lassco.co.uk)



## BUILDINGS & BOATS

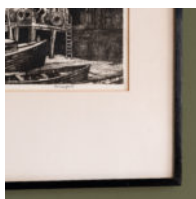
Norman Thomas Janes (1892-1980)

A framed and mounted black line etching by the artist-engraver Norman Jones RWS RE RSMA, showing a riverside wharf scene in the Lower Pool of the River Thames, possibly corresponding to the river frontage of Narrow Street, Limehouse. Signed in pencil by the artist.

DIMENSIONS: 1cm (0<sup>½</sup>" ) Wide

PRICE: £550

STOCK CODE: PS0040



### HISTORY

Born into a family of drapers at Egham in Surrey in 1892. Norman Janes went on to study at the Regent Street Polytechnic School of Art, during the years 1909-14.

After serving with the London Irish Rifles, and later as a Second Lieutenant with the Royal Irish Regiment and being wounded at the Battle of Cambrai in 1917, Janes went on to study drawing and painting under Henry Tonks at the Slade School of Fine Art.

Jones continued his apprenticeship by attending evening classes at the Central School of Arts and Crafts, (1922-23) under W P Robins (from whom he learned etching and engraving) and under Sir Frank Short and Malcolm Osborne at the Royal College of Art (1923-24).

Beginning in 1921, Janes exhibited with many of the leading London societies, including the Royal Academy of Arts, the Royal Society of Marine Artists and the influential the New English Art Club. He was elected an associate of the Royal Society of Painter-Engravers and Engravers in 1922, and a full member in 1938. He held two solo shows at the Beaux

Arts Gallery, London, in 1932 and 1945.

For much of his working life he lived in Hampstead, at No 2 Branch Hill, during which time he taught at the Hornsey School of Art and the Slade School.