

LASSCO

www.lassco.co.uk

THREE PIGEONS

LASSCO Three Pigeons

Milton Common,

Oxfordshire OX9 2JN

+44 (0)1844 277188

3pigeons@lassco.co.uk

BRUNSWICK HOUSE

30 Wandsworth Road,

London SW8 2LG

+44 (0) 20 7394 2100

brunswick@lassco.co.uk



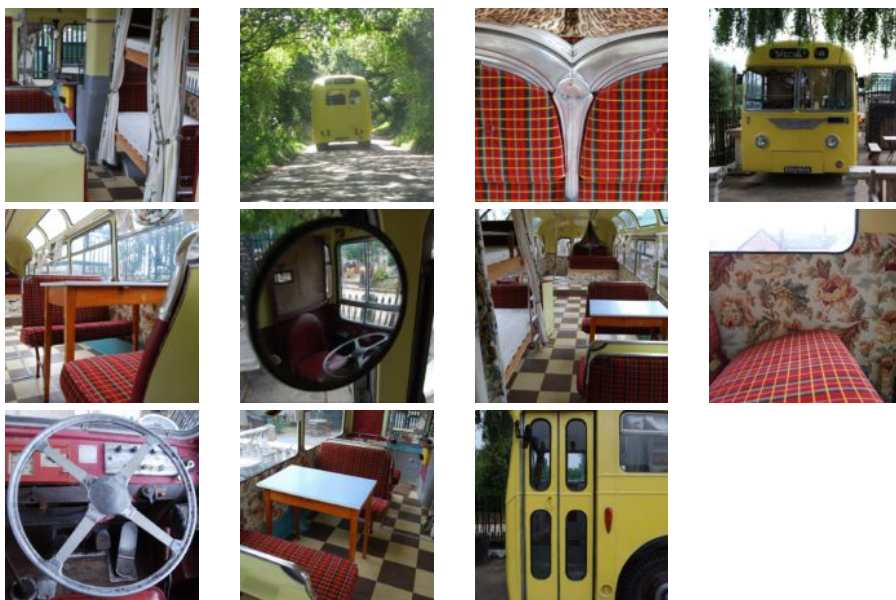
AN ORIGINAL 1950S LEYLAND CUB BUS

ex. of the Bournemouth Corporation, the 'Boscombe Beach Bus', professionally refurbished by Love Lane Caravans,

this rare 6.5 tonne passenger bus has been revitalised and refitted, with tube steel bunks and a double bed (with a headboard incorporating a vintage bus bumper); original seats have been recovered in 'Routemaster' moquette and sit either side of a formica topped table in the dining area; vintage curtains and wallpaper finish the interior. She is registered as an historic vehicle, has a reliable engine and is currently fully roadworthy. She is MOT and Road Tax exempt.

DIMENSIONS: 298cm (117³/₄"") High, 242cm (95³/₄"") Wide, 900cm (354³/₄"") Long

STOCK CODE: 43039



HISTORY

Along the Dorset coast from Christchurch and the Undercliffe Road to Boscombe Pier and the beach at Bournemouth, the "Boscombe Beach Bus", in its jolly yellow livery, would have been busy at this time of year.

It was known locally as the "Lily Langtry" and on sunny summer days in the late 1950's would

have been packed with excited children and holidaymakers heading for the beach.



Boscombe Beach Bus c.1958



The Coast Road to Bournemouth,
1950's



Boscombe Chine 1950's where the
Beach Bus turned back to
Christchurch



The Boscombe Bus at the Mallard
Road Depot, Bournemouth

The destination roll reads:

SPECIAL

PINES & TINES

TOWN TOUR

BOSCOMBE

BOSCOMBE PIER

BOURNEMOUTH

LANGUAGE SCHOOL

ALUM CHINE

CHRISTCHURCH



Our bus pictured in 1972 - for a few years it was loaned to Burton on Trent

This rare original Leyland Cub 6.5 tonne passenger bus, revitalised and refitted and is fully roadworthy. The curved hi-line glazing along the flanks lets the summer sunshine pour in.

She is registered as an historic vehicle and is MOT and Road Tax exempt. The bus has been given an internal make-over retaining a retro 1950's feel and making her more versatile for domestic use. The seats are largely removed, the floor chequer-board tiled, and a double bed with a chrome bumper head-board and two bunk beds have been inserted.



A dining area incorporates the original seats which have been recovered in 'Routemaster' moquette and which sit either side of a formica topped table. Vintage curtains and floral wallpaper finish the interior.



The Lily Langtry parked at LASSCO



We're All Going on a Summer Holiday!