

**LASSCO**

[www.lassco.co.uk](http://www.lassco.co.uk)

THREE PIGEONS

LASSCO Three Pigeons  
Milton Common,  
Oxfordshire OX9 2JN  
+44 (0)1844 277188  
[3pigeons@lassco.co.uk](mailto:3pigeons@lassco.co.uk)

BRUNSWICK HOUSE

30 Wandsworth Road,  
London SW8 2LG  
+44 (0) 20 7394 2100  
[brunswick@lassco.co.uk](mailto:brunswick@lassco.co.uk)



## AN OIL ON BOARD LANDSCAPE BY FYFFE CHRISTIE,

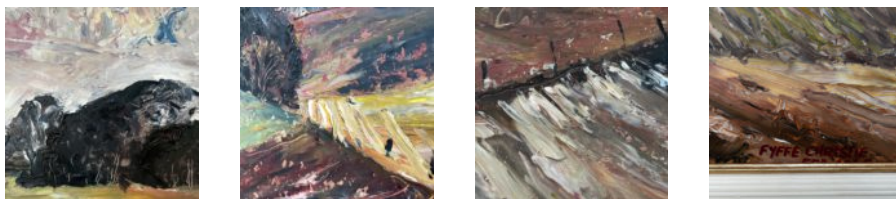
Ploughed Fields, 1968,

The depiction of rolling fields and animated sky realised in scrapes, dabs and flourishes of the palette knife, presented in a painted pine frame with gilt slip, signed bottom right,

DIMENSIONS: 50cm (19<sup>3/4</sup>" ) High, 76cm (30") Wide, framed dimensions 63cm x 88cm,

PRICE: £675

STOCK CODE: 46649



### HISTORY

Fyffe Christie 1918-1979, born Hertfordshire and moved to Glasgow aged 12; served in the Scottish Rifles 9th Cameronians during the War, after which he enrolled at Glasgow School of Art, winning the Newbery Medal as the outstanding student of his year; a draughtsman and muralist of note. The date of execution and putative title recorded in the catalogue accompanying the Gerber Fine Arts exhibition (Glasgow, 2019) of a broad selection of Christie's work, in which this painting was shown,