

LASSCO

[www.lassco.co.uk](http://www.lassco.co.uk)

THREE PIGEONS

LASSCO Three Pigeons

Milton Common,

Oxfordshire OX9 2JN

+44 (0)1844 277188

[3pigeons@lassco.co.uk](mailto:3pigeons@lassco.co.uk)

BRUNSWICK HOUSE

30 Wandsworth Road,

London SW8 2LG

+44 (0) 20 7394 2100

[brunswick@lassco.co.uk](mailto:brunswick@lassco.co.uk)



# AN ENGLISH HIGH-BACKED OAK, ASH AND ELM WINDSOR CHAIR,

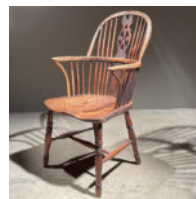
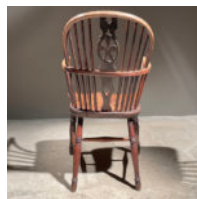
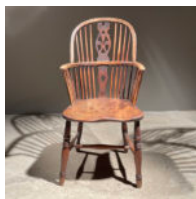
mid-nineteenth century,

the hooped back centred with a pierced splat, above the curved arm-rail and dished seat, raised on turned legs linked with an H-stretcher,

DIMENSIONS: 94cm (37") High, 45cm (17<sup>3/4</sup>") Wide, 57cm (22<sup>1/2</sup>") Deep

PRICE: £470

STOCK CODE: 45588



## HISTORY

This pattern of Windsor comb-back chair may point to a Nottinghamshire origin – which is where LASSCO sourced it. Confusingly they can be referred to as a Lancashire style – but were often made in Nottingham workshops. However, with triple-ring carvings to the legs, it suggests a Chilterns origin – so whilst at LASSCO Three Pigeons, it's not far from home.

High Wycombe was the epicentre of chair-making in the mid 19th Century. In the 1860's the workshops of the town and environs were producing five thousand per day. (See: Ivan G Sparkes "English Windsor Chairs".