

**LASSCO**

[www.lassco.co.uk](http://www.lassco.co.uk)

**THREE PIGEONS**

London Road,  
Milton Common,  
Oxfordshire OX9 2JN  
+44 (0)1844 277188  
3pigeons@lassco.co.uk

**BRUNSWICK HOUSE**

30 Wandsworth Road,  
Vauxhall,  
London SW8 2LG  
+44 (0) 20 7394 2100  
brunswick@lassco.co.uk

**ROPEWALK**

Arch 52,  
Maltby Street,  
Bermondsey,  
London SE1 3PA  
+44 (0)20 7394 8061  
ropewalk@lassco.co.uk

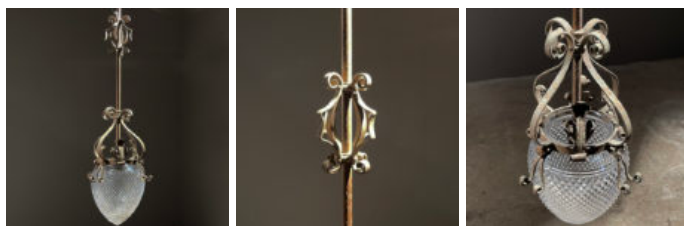


# AN EDWARDIAN WROUGHT-IRON AND CUT-GLASS PENDANT HALL-LIGHT

the pointed cut-glass shade on a rod suspension embellished with scrolled brackets and foliate clasps,

DIMENSIONS: 118cm (46<sup>1</sup>/<sub>2</sub>"") High, 25cm (9<sup>3</sup>/<sub>4</sub>"") Wide

STOCK CODE: 45583



## HISTORY

This ceiling-light, requiring that it is hard-wired in, should be installed and certified by an electrician who will re-cable it with a replacement bulb-holder. If you would like LASSCO to re-wire it please specify your required cable length and allow 2weeks workshop time when ordering.