

LASSCO

www.lassco.co.uk

THREE PIGEONS

LASSCO Three Pigeons

Milton Common,

Oxfordshire OX9 2JN

+44 (0)1844 277188

3pigeons@lassco.co.uk

BRUNSWICK HOUSE

30 Wandsworth Road,

London SW8 2LG

+44 (0) 20 7394 2100

brunswick@lassco.co.uk



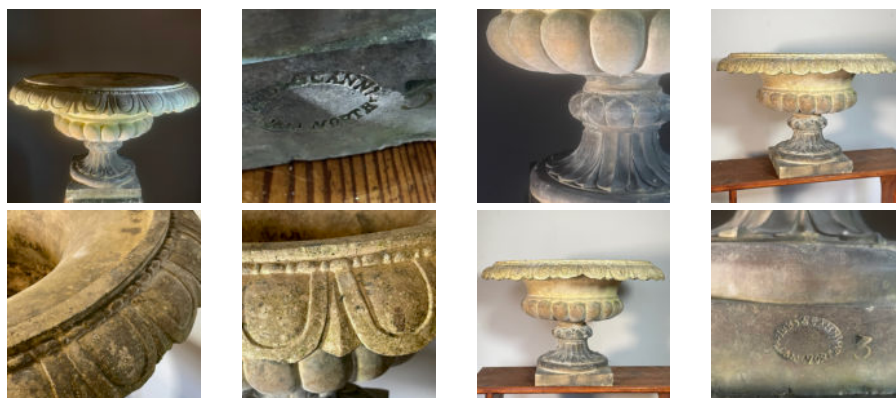
A VICTORIAN STONEWARE TAZZA URN

by Gibbs & Canning, Tamworth,

the semi-lobed basin with broad everted rim, raised on a lobed and fluted socle; repairs to the neck of the socle, some losses to rim, makers' stamp to base,

DIMENSIONS: 44cm (17^{3/4}"") High, 68cm (26^{3/4}"") Wide, 68cm (26^{3/4}"") in Diameter

STOCK CODE: 47203



HISTORY

Gibbs and Canning were one of the great English stoneware and architectural ceramics manufacturers of the Midlands. They are best remembered for the considerable cast adornments to The Royal Albert Hall. They made the animalia sculptures for Alfred Waterhouse's Natural History Museum (living on one wing, extinct on the other) and the embellishments to his other great project: Manchester Town Hall. Founded in 1847 the company finally closed in the 1950's by which time its range was confined to utilitarian products such as drains.

