

# LASSCO

[www.lassco.co.uk](http://www.lassco.co.uk)

THREE PIGEONS

LASSCO Three Pigeons  
Milton Common,  
Oxfordshire OX9 2JN  
+44 (0)1844 277188  
[3pigeons@lassco.co.uk](mailto:3pigeons@lassco.co.uk)

BRUNSWICK HOUSE

30 Wandsworth Road,  
London SW8 2LG  
+44 (0) 20 7394 2100  
[brunswick@lassco.co.uk](mailto:brunswick@lassco.co.uk)



# A VICTORIAN CAST IRON WEIGHT-LIMIT SIGN FOR A CANAL-BRIDGE

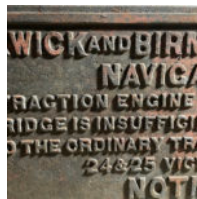
from the Warwick and Birmingham Canal

the rectangular plate with a raised border and inset corners, cast in relief with raised lettering:  
"WARWICK AND BIRMINGHAM CANAL NAVIGATION, TO TRACTION ENGINE DRIVERS AND OTHERS, THIS BRIDGE IS INSUFFICIENT TO CARRY WEIGHTS BEYOND THE ORDINARY TRAFFIC OF THE DISTRICT 24 & 25 VICT GAP 70 , NOTICE, NO LOCOMOTIVE TRACTION OR OTHER ENGINE WILL BE ALLOWED TO PASS OVER THIS BRIDGE WITHOUT THE CONSENT OF THE CANAL COMPANY, BY ORDER"

DIMENSIONS: 54cm (21<sup>1/4</sup>" ) High, 90cm (35<sup>1/2</sup>" ) Wide, 1.6cm (0<sup>3/4</sup>" ) Thick

PRICE: £375

STOCK CODE: 46021



## HISTORY

This sign would have been found on the road approach to one of the 15 bridges on the Warwick and Birmingham Canal. The cut was authorised in 1793 and was open for navigation by 1800. It was linked to the Stratford on Avon Canal three years later and by 1844 was connected to the Birmingham and Warwick Junction Canal. Its prosperity was to wane soon after as the railways started to compete.