

LASSCO

www.lassco.co.uk

THREE PIGEONS

LASSCO Three Pigeons

Milton Common,

Oxfordshire OX9 2JN

+44 (0)1844 277188

3pigeons@lassco.co.uk

BRUNSWICK HOUSE

30 Wandsworth Road,

London SW8 2LG

+44 (0) 20 7394 2100

brunswick@lassco.co.uk



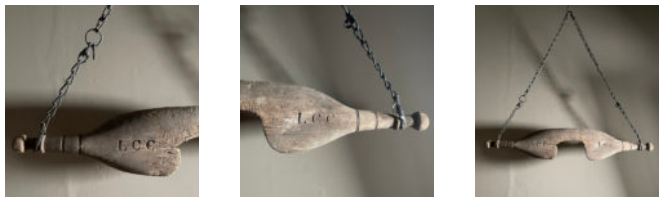
A VICTORIAN CARVED WOODEN YOKE

for the carrying of produce - such as two pails of milk
shaped for the neck and shoulders and incised with the lettering "LCC", with chains for
suspending cargo

DIMENSIONS: 87cm (34^{3/4}") Wide

PRICE: £105

STOCK CODE: 47221



HISTORY

if the "LCC" lettering stands here for the "London County Council" – and it could well do – it will
date this yoke to post 1889 when the LCC was formed (it was made obsolete in 1965).