

**LASSCO**

[www.lassco.co.uk](http://www.lassco.co.uk)

**THREE PIGEONS**

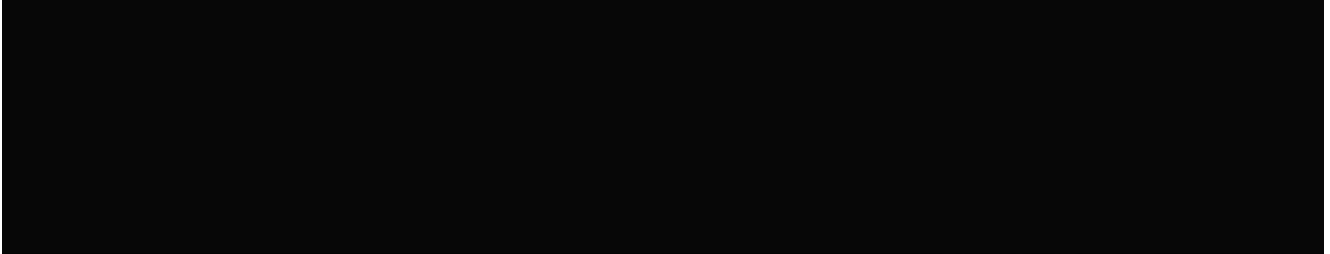
London Road,  
Milton Common,  
Oxfordshire OX9 2JN  
+44 (0)1844 277188  
3pigeons@lassco.co.uk

**BRUNSWICK HOUSE**

30 Wandsworth Road,  
Vauxhall,  
London SW8 2LG  
+44 (0) 20 7394 2100  
brunswick@lassco.co.uk

**ROPEWALK**

Arch 52,  
Maltby Street,  
Bermondsey,  
London SE1 3PA  
+44 (0)20 7394 8061  
ropewalk@lassco.co.uk

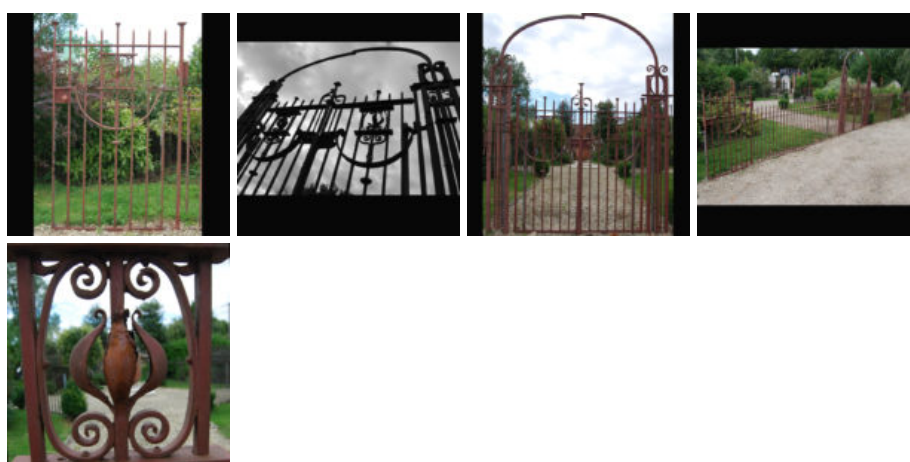


# A SET OF SCOTTISH VICTORIAN WROUGHT IRON ENTRANCE GATES AND RAILINGS,

in the Arts and Crafts style, removed from Dennistoun Baptist Church, Glasgow, the pair of entrance gates with scroll-work and foliate ornament, surmounted by a lantern over-throw (lantern not present) and flanked by scrollwork posts, a pedestrian single gate en suite and the run of panels of railing with occasional posts of scrollwork and incorporating one curved section all with original angled support stantions,

DIMENSIONS: 140cm (55") High, 1950cm (767<sup>3/4</sup>") Wide, 1950cm (767<sup>3/4</sup>") The Run, the railing

STOCK CODE: 43078



## HISTORY

Measurements: The railing measures 140cm high (122cm to the top rail). There are nine panels of railing, the run totalling 19.5m (Widths (cm): 4no. at approx 370 and three more at 100/75/45) and including a curved section adding 251cm on an approximate 1m radius. The gates measure 167cm high to the top rail, 167cm wide the pair - excluding hinge gap. The arched overthrow is approx. 305cm at highest, its posts on 220cm centres, each post being 31cm wide. The pedestrian gate measures 167cm high to the top rail, 115cm wide.

Glasgow is blessed with handsome railings across the city, home as it is to some of the most revered iron-foundries of the Victorian times.