

# LASSCO

[www.lassco.co.uk](http://www.lassco.co.uk)

THREE PIGEONS

LASSCO Three Pigeons

Milton Common,

Oxfordshire OX9 2JN

+44 (0)1844 277188

[3pigeons@lassco.co.uk](mailto:3pigeons@lassco.co.uk)

BRUNSWICK HOUSE

30 Wandsworth Road,

London SW8 2LG

+44 (0) 20 7394 2100

[brunswick@lassco.co.uk](mailto:brunswick@lassco.co.uk)



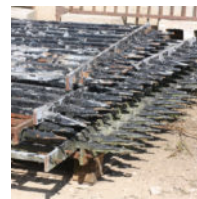
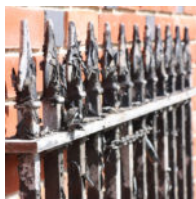
# A RUN OF ENGLISH STEEL RAILING,

20th Century,

with spear finials raised on square section plain bars, in 18 panels incorporating two hinged sections, one kick - to adjust the height by one step and a curved section, peeling paint - good for a re-spray,

DIMENSIONS: 133cm (52<sup>3</sup>/<sub>4</sub>"") High, 2500cm (984<sup>3</sup>/<sub>4</sub>"") Wide, 2500cm (984<sup>3</sup>/<sub>4</sub>"") The Run, (115cm top rail to bottom rail) Panel widths: 53 to 243cm x 18No)

STOCK CODE: 45410



## HISTORY

Some losses of finials – but largely all there.

Widths of the panels approx:

151, 162, 292, 199, 197, 243, 198, 74, 120, 155, 188, 116, 38, 127, 80, 100, 60, 53, 216 cm