

LASSCO

www.lassco.co.uk

THREE PIGEONS

LASSCO Three Pigeons

Milton Common,

Oxfordshire OX9 2JN

+44 (0)1844 277188

3pigeons@lassco.co.uk

BRUNSWICK HOUSE

30 Wandsworth Road,

London SW8 2LG

+44 (0) 20 7394 2100

brunswick@lassco.co.uk



A PAIR OF GOOD LATE VICTORIAN STAINED GLASS CHURCH WINDOWS

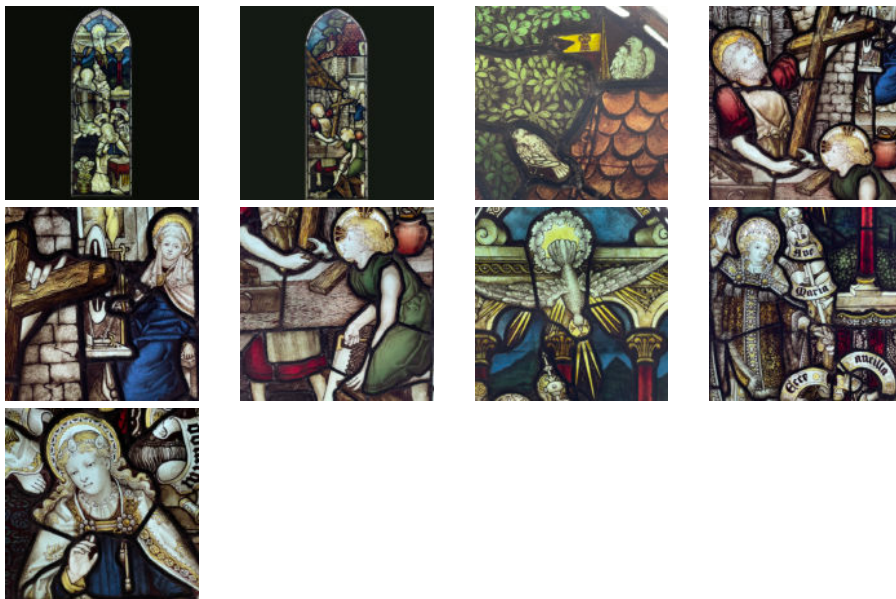
by Charles Eamer Kempe (1837-1907)

each lancet-arched leaded window eloquently painted with an early New Testament scene, one light depicting The Annunciation - Mary being visited by the holy dove and an angel, the other light depicting Jesus learning joinery from St. Joseph and glancing at the wooden cross his unknowing father has created, Mary is depicted spinning wool in the house yonder,

DIMENSIONS: 123.5cm (48½") High, 41cm (16¼") Wide, 1cm (0½") Deep, each window excluding display frame

PRICE: £12,000 the pair

STOCK CODE: 46194



HISTORY

Note the maker's mark of the Wheatsheaf painted as a pennant at the roof: the Wheatsheaf is often seen on work produced from Kempe's workshop, it was a motif taken from his family coat of arms.

Kempe's workshop had a prolific output from the 1860's and survived him until 1934. His hand wasn't usually involved in the painting or making of the stained glass but he oversaw a particularly talented pool of stained glass artists. Their recognisable and established house style enabled the company to continue after his death.

These two panels are probably earlier windows - they are of a more complex lively composition rather than the high quality standing figures that later work usually entailed - and are more sought after as a result.