

**LASSCO**

[www.lassco.co.uk](http://www.lassco.co.uk)

THREE PIGEONS

LASSCO Three Pigeons

Milton Common,

Oxfordshire OX9 2JN

+44 (0)1844 277188

[3pigeons@lassco.co.uk](mailto:3pigeons@lassco.co.uk)

BRUNSWICK HOUSE

30 Wandsworth Road,

London SW8 2LG

+44 (0) 20 7394 2100

[brunswick@lassco.co.uk](mailto:brunswick@lassco.co.uk)



## A MID-VICTORIAN STAINED GLASS CHANCEL WINDOW

The Ascension, ex. St Gabriel's, Easton, Bristol 1868-70, dem.1975, probably from the workshops of Clayton & Bell, the leaded and painted window ornamented with a canopy of crotcheted gothic spires over the figure of Christ ascendant, four saints beneath, the background filled with blue scrolling clover leaves in the Arts and Crafts style, interspersed with orange starbursts. The top to the original canopy is lost, and restorations include the addition of lead comes to the profile of the bottom right saint. The window was restored in the 1980s and is mounted on a well built, bespoke oak light box with hinged access to the light tube array,

DIMENSIONS: 357cm (140<sup>1/2</sup>" ) High, 74.5cm (29<sup>3/4</sup>" ) Wide

STOCK CODE: 43716



### HISTORY

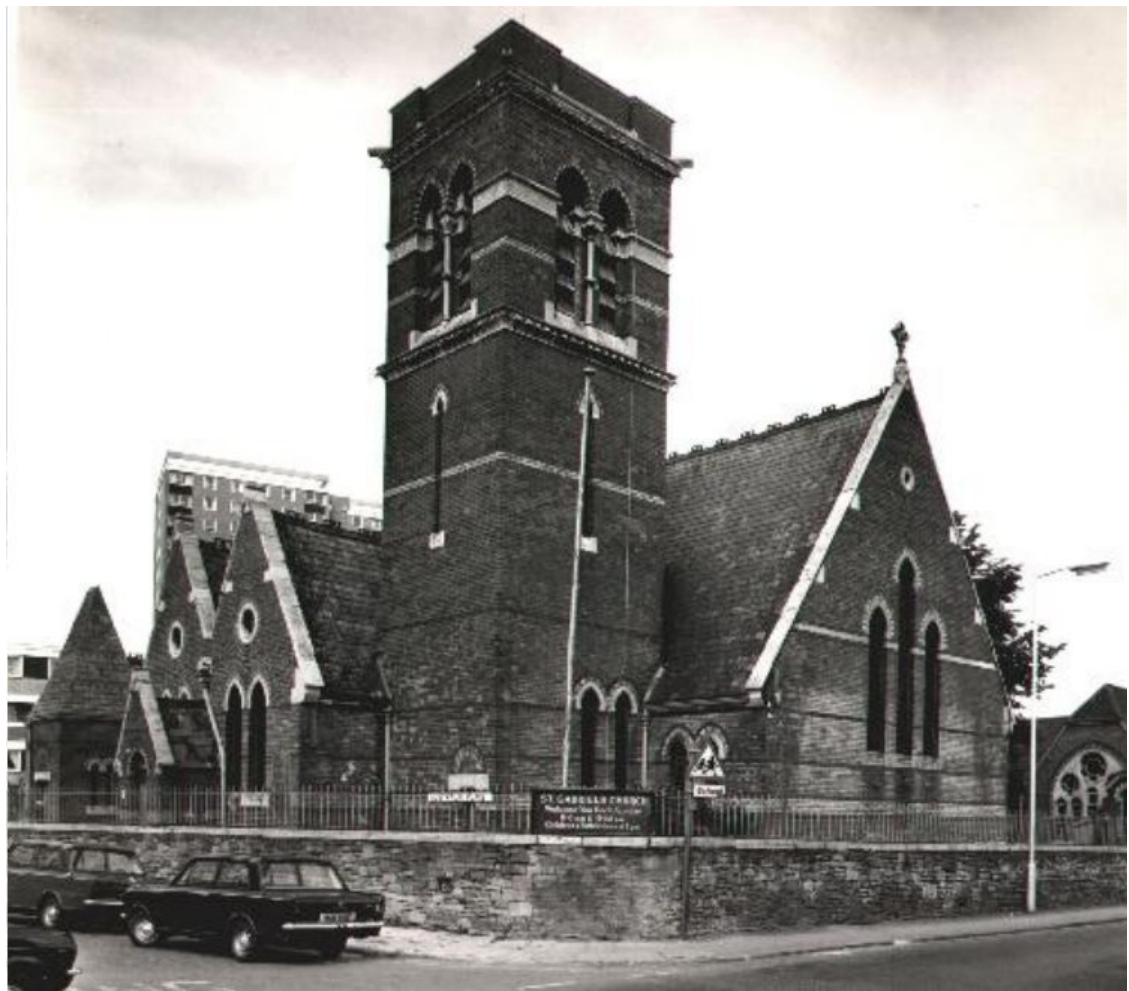
The church of St Gabriel's, Easton, Bristol was built in 1868-70 by J.C.Neale in a similar style to his earlier St Andrew the Less in Dowry Square, Hotwells. It was built primarily of red brick, with decoration in blue and yellow brick. The church was originally built with a spire. A R Gough altered the church, somewhat to its detriment, in 1928; he removed the spire and replaced it with a brick parapet.



Ultimately, the church stood in the way of the planned outer circuit road (now Easton Way), and was declared redundant and then declared unsafe and demolished with indecent haste in 1975, the day the church was "listed" for preservation. Some of the glass was saved including this the central light of the staggered Eastern triptych window.



In the above photograph the present stained glass window is just discernible central to the east end.





Save