

LASSCO

www.lassco.co.uk

THREE PIGEONS

LASSCO Three Pigeons

Milton Common,

Oxfordshire OX9 2JN

+44 (0)1844 277188

3pigeons@lassco.co.uk

BRUNSWICK HOUSE

30 Wandsworth Road,

London SW8 2LG

+44 (0) 20 7394 2100

brunswick@lassco.co.uk



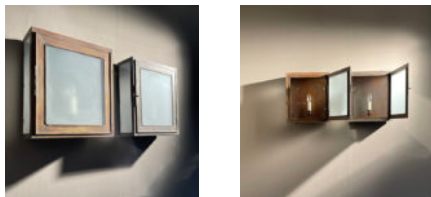
A GLAZED TOLE PEINT WALL-MOUNTED LANTERN,

20th Century, RESERVED,

the rectangular section lantern, glazed with obscured glass to the front and sides, the hinged door accessing a singular sconce,

DIMENSIONS: 39cm (15^{3/4}") High, 35cm (13^{3/4}") Wide, 12cm (4^{3/4}") Deep

STOCK CODE: 45569



HISTORY

Two lanterns are available as pictured - of same manufacturer but they have weathered to different colours.

As with all externally situated lighting, these lamps must be hard-wired in and certified by a qualified electrician.