

LASSCO

[www.lassco.co.uk](http://www.lassco.co.uk)

THREE PIGEONS

LASSCO Three Pigeons

Milton Common,

Oxfordshire OX9 2JN

+44 (0)1844 277188

[3pigeons@lassco.co.uk](mailto:3pigeons@lassco.co.uk)

BRUNSWICK HOUSE

30 Wandsworth Road,

London SW8 2LG

+44 (0) 20 7394 2100

[brunswick@lassco.co.uk](mailto:brunswick@lassco.co.uk)



# AN ENGLISH LEAD FIGURE OF A BOY FISHING

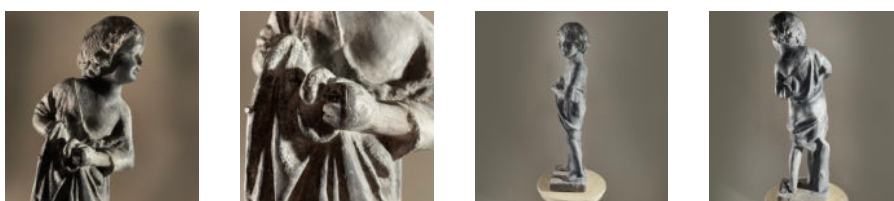
early 20th Century, by H. Crowther

clutching his catch in a net, a dropped fish at his feet, craning to look into the water,

DIMENSIONS: 68cm (26<sup>3/4</sup>" ) High, 19cm (7<sup>1/2</sup>" ) Wide, 16cm (6<sup>3/4</sup>" ) Deep, widths at base

PRICE: £1,165

STOCK CODE: 46100



## HISTORY

H Crowther Ltd was founded in a small workshop in Chiswick, South West London in 1908. Henry Crowther was self-taught and was a key figure in reviving a venerable tradition of English figurative and decorative architectural leadwork that had all but disappeared in Victorian times.

The famous lead-foundries of Hyde Park Road that had seen the work of Van Nost and John Cheere, among many others, in a late 18<sup>th</sup> Century heyday had then declined and disappeared by the time of The Great Exhibition. With the rise of the Decorative Cast-Iron foundries – such as Coalbrookdale in Shropshire, Carron in Falkirk and Val d’Osne near Paris lead-casting was perhaps considered a bit old-hat and couldn’t compete.

By Edwardian times though, Crowthers found an enthusiastic market and brought back old designs and introduced new models – the small foundry also found themselves increasingly in-demand for restoration work for the Great Houses that needed repairs to their Georgian statues – Castle Howard and Chatsworth being prime examples.

Henry Crowther passed these restoration and casting skills to his son Jim and grandson Paul.

