

LASSCO

www.lassco.co.uk

THREE PIGEONS

LASSCO Three Pigeons

Milton Common,

Oxfordshire OX9 2JN

+44 (0)1844 277188

3pigeons@lassco.co.uk

BRUNSWICK HOUSE

30 Wandsworth Road,

London SW8 2LG

+44 (0) 20 7394 2100

brunswick@lassco.co.uk



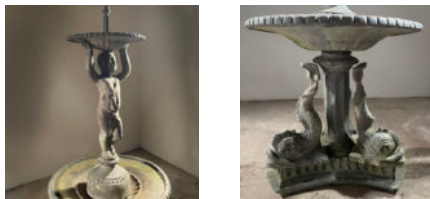
AN ENGLISH FIGURAL LEAD TWO-TIER FOUNTAIN

early 20th Century, by H. Crowther

with two graduated bowls, the upper with a spout held aloft by a standing putto, the lower raised of a trio of dolphins around a cylindrical post and on a triform base

DIMENSIONS: 154cm (60^{3/4}") High, 64.98cm (25^{1/2}") Wide, 65cm (25^{1/2}") in Diameter

STOCK CODE: 46214



HISTORY

H Crowther Ltd was founded in a small workshop in Chiswick, South West London in 1908. Henry Crowther was self-taught and was a key figure in reviving a venerable tradition of English figurative and decorative architectural leadwork that had all but disappeared in Victorian times.

The famous lead-foundries of Hyde Park Road that had seen the work of Van Nost and John Cheere, among many others, in a late 18th Century heyday had then declined and disappeared by the time of The Great Exhibition. With the rise of the Decorative Cast-Iron foundries – such as Coalbrookdale in Shropshire, Carron in Falkirk and Val d’Osne near Paris lead-casting was perhaps considered a bit old-hat and couldn’t compete.

By Edwardian times though, Crowthers found an enthusiastic market and brought back old designs and introduced new models – the small foundry also found themselves increasingly in-demand for restoration work for the Great Houses that needed repairs to their Georgian statues – Castle Howard and Chatsworth being prime examples.

Henry Crowther passed these restoration and casting skills to his son Jim and grandson Paul.