

LASSCO

www.lassco.co.uk

THREE PIGEONS

LASSCO Three Pigeons
Milton Common,
Oxfordshire OX9 2JN
+44 (0)1844 277188
3pigeons@lassco.co.uk

BRUNSWICK HOUSE

30 Wandsworth Road,
London SW8 2LG
+44 (0) 20 7394 2100
brunswick@lassco.co.uk



A BRITISH CAST IRON VINE PATTERN GARDEN SEAT

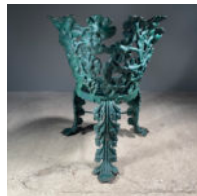
early 20th Century, after the original by Charles Young of Edinburgh (Patented in 1850)

the back cast as a curved network of vine-leaves and grapes above the circular seat pierced as a geometric grille and raised on a trio of cabriole shaped vine-leaf supports linked with a tri-form stretcher,

DIMENSIONS: 75cm (29^½") High, 62.5cm (24^½") Wide

PRICE: £895

STOCK CODE: 47041



HISTORY

This extraordinary design by Young's in Edinburgh proved popular and was to be reproduced by a number of other foundries such as Handyside of Derbyshire (the Patents available for cast-iron in Victorian times was remarkably short: only 2or3years).

Young's produced variants of the seat - as a bench or chair - and published them in a catalogue.

By
Agreement



For
His Majesty

ILLUSTRATED AND DESCRIPTIVE
CATALOGUE

MACHINERY, IMPLEMENTS, TOOLS,
MANUFACTURED ARTICLES, RAW MATERIALS, &c.

RESPECTED BY

RAILWAYS, MINES, MARINE DEPARTMENT, IRON ARCHITECTURE, BRIDGES, PIERS,
BREASTWORKS; FLOUR, OIL, AND SAW MILLS; DISTILLERIES, GAS WORKS,
BRICK AND TILE WORKS; AGRICULTURE, HORTICULTURE, AND
MISCELLANEOUS MANUFACTURES, &c. &c.

AND

Scientific and Practical Purposes

IN

SOUTH AMERICA AND OTHER COUNTRIES.

MANUFACTURED BY

MESSES CHARLES D. YOUNG AND COMPANY,
ENGINEERS, IRON FOUNDERS, COYRATTONS, &c.

15 GREAT GEORGE STREET, WESTMINSTER, LONDON.
MONTREAL AND 57 KING STREET, QUEBEC.

71

MONTREAL, &c.	QUEBEC, &c.

GRANDS CHAIRS AVEC SIÈGES.
A great variety of these chairs and armchairs suitable to the
taste in place of the old ones. They are made either of
iron or wrought iron, and also in place of the old ones. Any design
preferred by the purchaser can be manufactured.

CHAIRS Y SILLAS PARA CAMARAS.
Una gran variedad de estas sillas y de armadores de las
sillas en la forma de las antiguas. Se hacen de hierro o de
hierro forjado, y en place de las antiguas. Se pueden hacer de
cualquier diseño que guste al comprador.