

LASSCO

www.lassco.co.uk

THREE PIGEONS

LASSCO Three Pigeons

Milton Common,

Oxfordshire OX9 2JN

+44 (0)1844 277188

3pigeons@lassco.co.uk

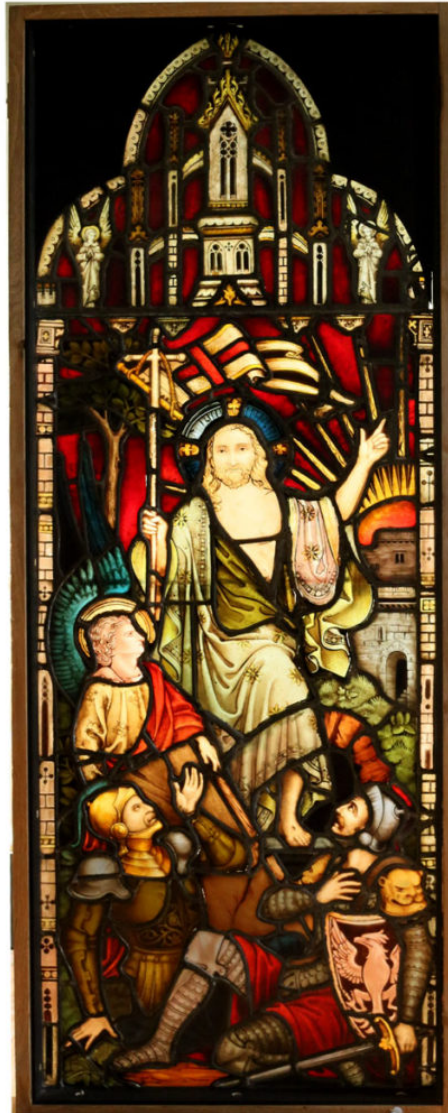
BRUNSWICK HOUSE

30 Wandsworth Road,

London SW8 2LG

+44 (0) 20 7394 2100

brunswick@lassco.co.uk

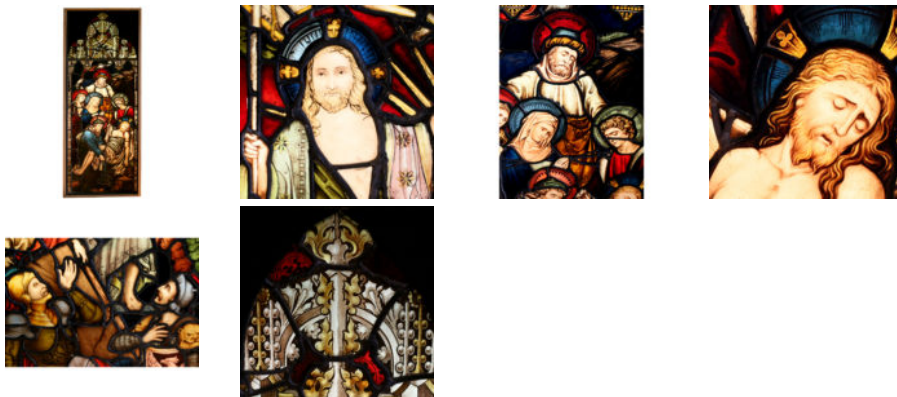


A PAIR OF FINE VICTORIAN STAINED GLASS PANELS

By Clayton and Bell 1886, removed from St George's Church, Perry Hill, London
Respectively depicting the Entombment and the Resurrection, the whole surmounted by Gothic tracery,

DIMENSIONS: 148cm (58^{3/4}") High, 55.5cm (21^{3/4}") Wide, 8cm (3^{3/4}") Deep

STOCK CODE: 23666



HISTORY

'The Entombment' depicts two apostles holding the body of Jesus, lowering it into the tomb. Another apostle holds a torch and Mary Magdalene looks on. 'The Resurrection' depicts sunrise and Christ rising from the tomb. Two startled soldiers look up from the ground. An angel watches Christ, Who bears a banner of victory in His left hand and raises His right hand with the index finger pointing heavenwards.