

LASSCO

www.lassco.co.uk

THREE PIGEONS

LASSCO Three Pigeons

Milton Common,

Oxfordshire OX9 2JN

+44 (0)1844 277188

3pigeons@lassco.co.uk

BRUNSWICK HOUSE

30 Wandsworth Road,

London SW8 2LG

+44 (0) 20 7394 2100

brunswick@lassco.co.uk



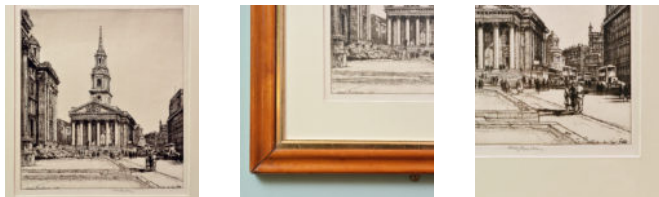
ST MARTINS IN THE FIELDS, A FRAMED ETCHING BY HENRY RUSHBURY

signed 1944

Rare dry-point engraving.

DIMENSIONS: 51cm (20") High, 49cm (19^{3/4}") Wide

STOCK CODE: p00343



HISTORY

Born at Harborne near Birmingham, Henry George Rushbury studied at the Birmingham College of Art where he specialised in stained glass design and mural decoration till 1909. He then worked for two years as assistant to Henry A. Payne, R.W.S., on decorations for the chapel at Madresfield Court, Worcestershire, and elsewhere before coming to London in 1912.

Rushbury was encouraged by Francis Dodd to begin making drypoints and etchings. He married artist Florence Lazell in 1914 and became an Official War Artist. Henry Rushbury joined the New English Art Club in 1917 and studied at the Slade School 1921 under Henry Tonks. His first one-man show was at Grosvenor Galleries in 1921. Became R.W.S. 1926 (Vice-Pres 1944); R.E.; A.R.A. 1927, R.A. 1936. Illustrated Sidney Dark's Paris 1927 and Sir Rennell Rodd's Rome 1930. Official War Artist 1940-5. Hon. A.R.I.B.A. 1948. Keeper of the Royal Academy 1949-64. Knighted in 1964, Sir Henry is remembered as an accomplished water-colourist, etcher and drypoint artist who favoured architectural scenes.